

## KORRODUR AL 2

Corrosion protection additive for solvent borne coating systems

**Chemical base** Organic/inorganic modified tannin derivate in solvent mixture

**Properties** **KORRODUR AL 2** is used e.g. in primers to compensate poor preparation of the substrate and unsatisfactory painting conditions:

- Manual derusting (residues of rust)
- Unfavourable weather conditions, e.g. damp surfaces
- Careless preparation of the substrate, e.g. traces of grease
- Difficulties caused by the type of construction or location, e.g. danger of explosion through flying sparks.

**KORRODUR AL 2** converts residual rust into non corroding iron tannate and provides long term protection against corrosion. If moisture is present it will be emulsified into the film during painting and will evaporate during drying. The wetting additive contained in **KORRODUR AL 2** ensures good penetration of the residual rust particles, dirt and wetting of badly degreased surfaces. Thus adhesion is promoted.

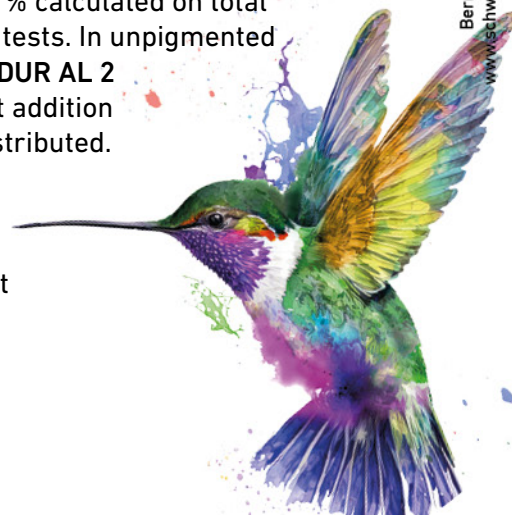
**Applications** **KORRODUR AL 2** is especially suitable for aluminium-pigmented systems, as its particular formulation prevents possible gassing in the drum. **KORRODUR AL 2** is primarily a rust converting additive for solvent based alkyd resin paints. **KORRODUR AL 2** also has a good anticorrosive effect in solvent borne coating systems based on epoxy, chlorinated rubber or acrylic binders. Typical applications are:

- Anticorrosive primers
- One-coat anticorrosive systems
- Maintenance finishes

<b>Technical data</b> (Guide values)	Appearance	light brown, transparent-cloudy liquid
	Density (ISO 2811-1)	0.90 g/cm <sup>3</sup>
	Flash point (ISO 1523)	24.5 °C
	Solid content (ISO 3251))	15%

**Processing** The optimum dosage of **KORRODUR AL 2** is 3.0 – 5.0 % calculated on total formulation and should be determined in laboratory tests. In unpigmented systems 7.0 – 8.0 % should be incorporated. **KORRODUR AL 2** should be added before dispersion of pigments. Post addition is possible, if **KORRODUR AL 2** is homogeneously distributed.

To test the activity of **KORRODUR AL 2** it is necessary to use pre-rusted test panels and to carry out accelerated weathering. The salt spray test



does not correlate with outdoor weathering and should not be used.

**KORRODUR AL 2** does not lead to yellowing or longer drying times. Delays in drying time may occur if excessive doses are used. A slight discolouration may be possible and has no influence on the effectiveness of the product. The use of **KORRODUR AL 2** in pastel coloured paints should be tested beforehand.

Paints produced with **KORRODUR AL 2** should be filled into appropriated cans, which are tin plated or coated from inside, in order to avoid rust as **KORRODUR AL 2** contains a small portion of water for technical reasons.

## Storage

Do not store **KORRODUR AL 2** at temperatures below 0 °C. Keep it in a cool, well-ventilated place. Occasionally, slight sediment is formed, which does not adversely affect the quality of **KORRODUR AL 2**. There is no need to stir in the sediment.

Subject to appropriate storage, the described properties of **KORRODUR AL 2** remain stable for at least 15 months, provided the original container is closed after use.

## Packaging

50 kg drum | 175 kg drum

