

SCHWEGO® inhibitor 6818

Corrosion protection additive | passivation of residual rust on steel

Chemical base Mixture of organic substances

Properties SCHWEGO® inhibitor 6818 is used to compensate poor preparation of the substrate and unsatisfactory painting conditions:

- Manual derusting (residues of rust)
- Unfavourable weather conditions, e.g. damp surface
- Careless preparation of the substrate, e.g. traces of grease
- Difficulties caused by type of construction or location, e.g. rest rust

SCHWEGO® inhibitor 6818 converts residual rust into a stable and non-corroding iron organic complex and provides long term protection against corrosion.

SCHWEGO® inhibitor 6818 ensures good penetration into the residual rust, thus adhesion is promoted. If SCHWEGO® inhibitor 6818 is used as a pretreatment for corroded steel surface. The reaction time is about 3 hours. It is not necessary to wash the surface with water after reaction.

The effectivity of SCHWEGO® inhibitor 6818 is observable by a blue to black discolouration of the substrate (Fig. 1 & 2). After appearance of this discolouration the new coating layer can be applied.

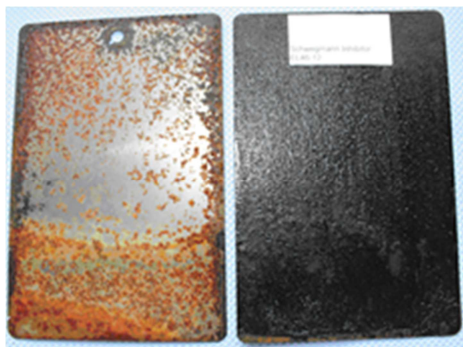


Fig 1: Left: untreated rusted steel plate; right: SCHWEGO® inhibitor 6818 treated steel plate after reaction





Fig 2: Rusty tools (left) and after treatment with SCHWEGO® inhibitor 6818

Applications

SCHWEGO® inhibitor 6818 is primarily used undiluted as a pretreatment product against residual rust on iron and steel surfaces. **SCHWEGO® inhibitor 6818** is not a coating and therefore the treated surface must be protected by a suitable coating system. Types of paints and the number of coatings needed will be determined by the aggressiveness of the environment. **SCHWEGO® inhibitor 6818** is perfect for the restoration of all kinds of steel parts, for instance in the industrial sector, but also for machineries, vehicles and chemical-technical plant components. **SCHWEGO® inhibitor 6818** shows a very good solvent stability and is recoatable with most current coating systems.

SCHWEGO® inhibitor 6818 is also used as a rust converting additive for water based coating systems. Typical applications are anticorrosive primers, one-coat anticorrosive systems and maintenance finishes.

Technical data (Guide values)

Appearance	light grey liquid
Density (ISO 2811-1)	1.02 g/cm ³
Flash point (ISO 1523)	39 °C
Non volatile content (ISO 3251)	33 %

Processing

When using **SCHWEGO® inhibitor 6818** undiluted for pretreatment, the surface has to be prepared. Loose rust, dirt, fat as well as with rust infiltrated coating residues are to be removed by means of steel brush, grinding wheels, etc. On the residual rust **SCHWEGO® inhibitor 6818** will be applied by means of paint brush, roller or spray gun.

The optimum dosage in a paint formulation of **SCHWEGO® inhibitor 6818** is between 3.0 – 5.0 %, calculated on system. **SCHWEGO® inhibitor 6818** should be added before dispersion of pigments. Postaddition is possible, if **SCHWEGO® inhibitor 6818** is homogeneously distributed. **SCHWEGO® inhibitor 6818** should be added slowly and carefully while mixing in order to avoid local overdoses.

SCHWEGO® inhibitor 6818 should be applied correctly onto the pretreated surface. In contact with remaining coating surfaces discolourations may occur. Hence, **SCHWEGO® inhibitor 6818** should be washed away with water or suitable solvents.



When using **SCHWEGO® inhibitor 6818** in a coating, yellow discolorations may occur and also drying time may increase and siccatives should be adjusted. The use of **SCHWEGO® inhibitor 6818** in pastel coloured paints should be tested beforehand.

Further, it is not advisable to recoat a water based coat containing **SCHWEGO® inhibitor 6818** with solvent based coating or should be tested by laboratory trials.

To test the activity of **SCHWEGO® inhibitor 6818** it is necessary to use pre-rusted test panels and to carry out accelerated weathering, such as WOM or QUV. The salt spray test does not correlate with outdoor weathering and should not be used.

The spreading rate of purely applied **SCHWEGO® inhibitor 6818** is about 4 - 8 m². The spreading rate depends mostly on application method and the condition of the substrate.

Storage

Do not store **SCHWEGO® inhibitor 6818** at temperatures below 5 °C and above 40°C. Stir it up before use. Keep it in a cool, well-ventilated place. Subject to appropriate storage, the described properties of **SCHWEGO® inhibitor 6818** remain stable for at least 15 months, provided the original container is closed after use.

Packaging

50 kg drum | 175 kg drum

